

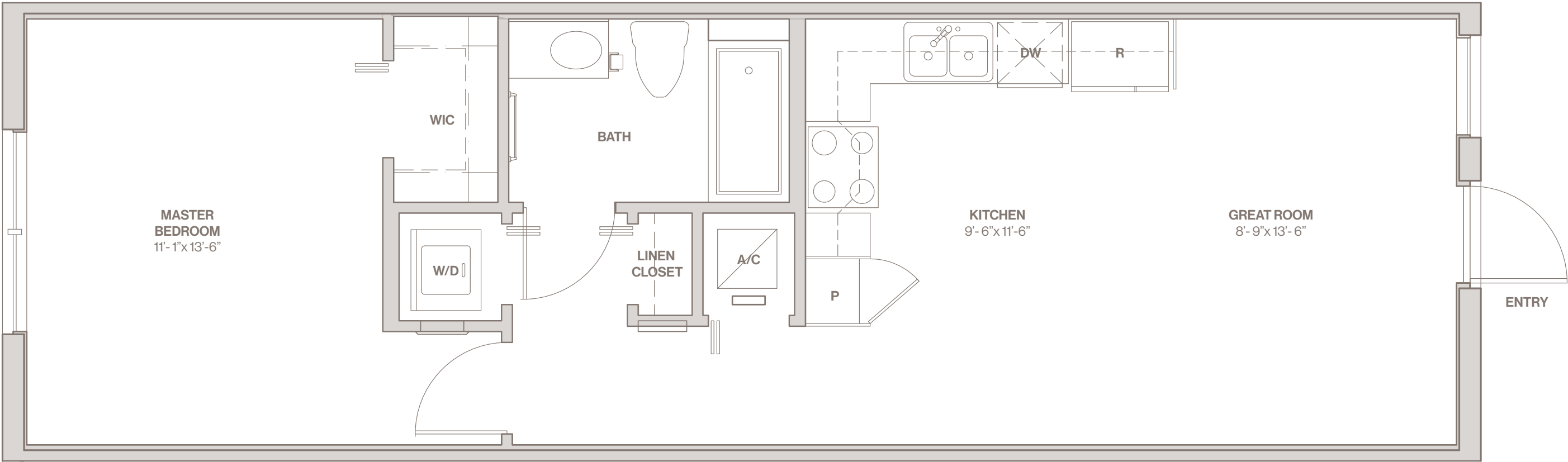
GARDEN
FLAT A

- 1 Bedroom
- 1 Bathroom

Interior Area 651 SQ. FT.

Features

- Covered Entry
- Stainless Steel Appliances
- Quartz Counters in Kitchen and Bathrooms
- Custom Cabinetry
- Built-In Microwave
- Dishwasher
- Washer/Dryer
- Pantry
- Linen Closet
- Walk-in Closet in Master Bedroom
- Ceiling Fan in Master Bedroom




10400 City Center Boulevard
Pembroke Pines, FL 33025

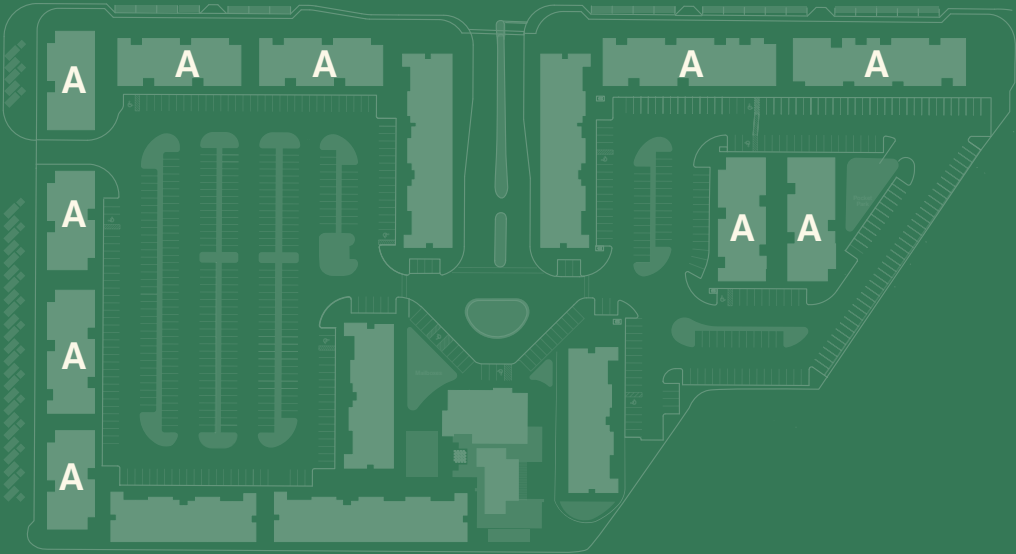
Ph. 954.884.5905
www.pinesgardenapartments.com

GARDEN FLAT

A

-  1 Bedroom
-  1 Bathroom

Interior Area 651 SQ. FT.



Stated square footages and dimensions are measured to the exterior boundaries of the exterior walls and the centerline of interior demising walls. Measurements of rooms set forth on this floor plan are generally taken at the farthest points of each given room (as if the room were a perfect rectangle), without regard for any cutouts or variations. Accordingly, the area of the actual room will typically be smaller than the product obtained by multiplying the stated length and width. All dimensions are estimates which will vary with actual construction, and all floor plans, specifications and other development plans are subject to change and will not necessarily accurately reflect the final plans and specifications for the development.



Pines Garden
at City Center

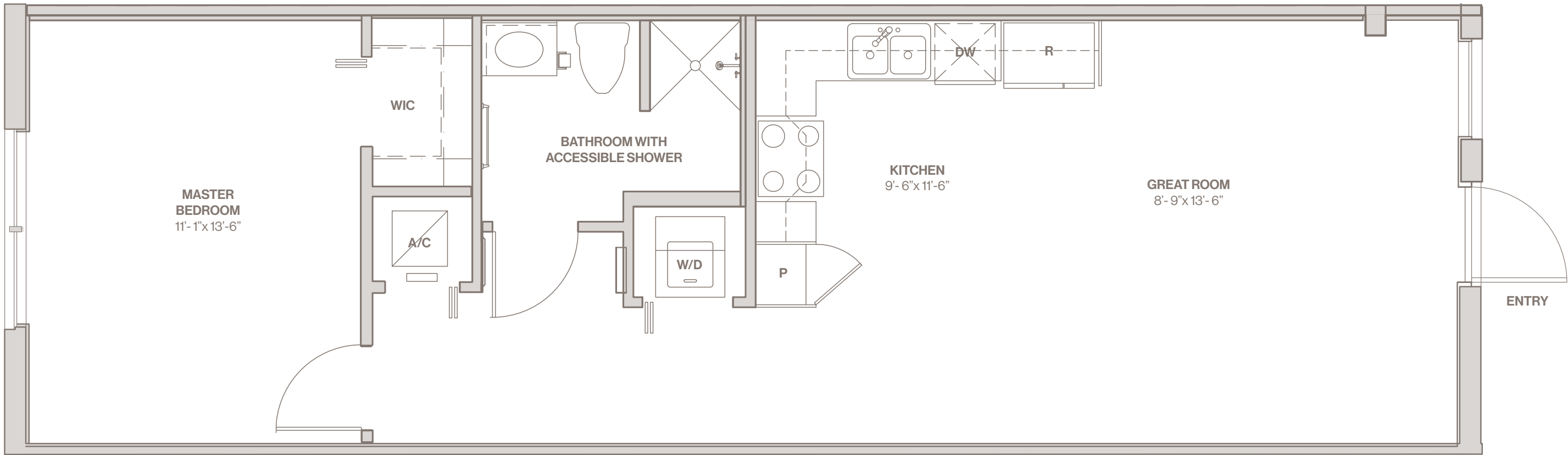
GARDEN
FLAT A2

- 1 Bedroom
- 1 Bathroom with accessible shower

Interior Area 651 SQ. FT.

Features

- Covered Entry
- Stainless Steel Appliances
- Quartz Counters in Kitchen and Bathrooms
- Custom Cabinetry
- Built-In Microwave
- Dishwasher
- Washer/Dryer
- Pantry
- Bathroom with Accessible Shower
- Walk-in Closet in Master Bedroom
- Ceiling Fan in Master Bedroom





10400 City Center Boulevard
Pembroke Pines, FL 33025

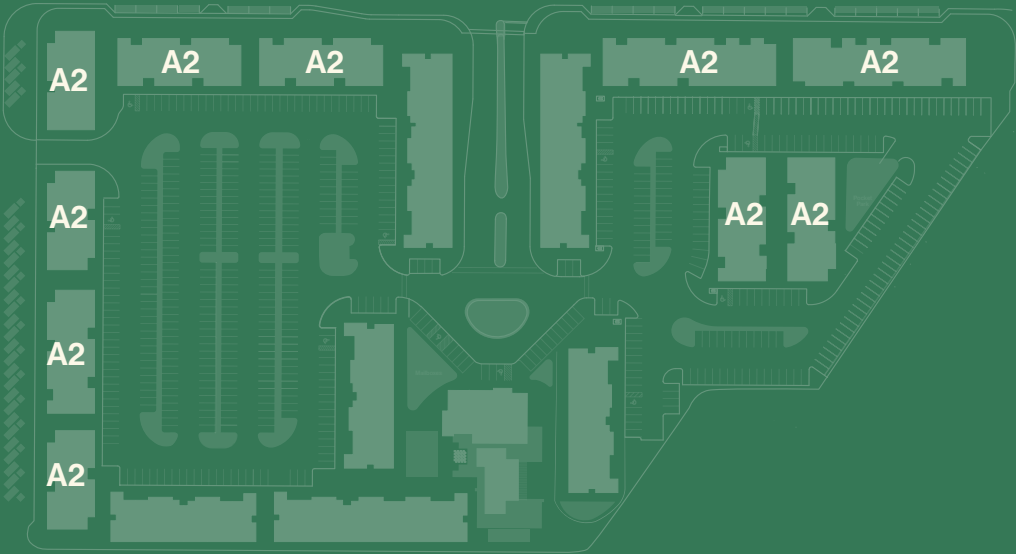
Ph. 954.884.5905
www.pinesgardenapartments.com

GARDEN FLAT

A2

-  1 Bedroom
-  1 Bathroom with
accessible shower

Interior Area 651 SQ. FT.



Stated square footages and dimensions are measured to the exterior boundaries of the exterior walls and the centerline of interior demising walls. Measurements of rooms set forth on this floor plan are generally taken at the farthest points of each given room (as if the room were a perfect rectangle), without regard for any cutouts or variations. Accordingly, the area of the actual room will typically be smaller than the product obtained by multiplying the stated length and width. All dimensions are estimates which will vary with actual construction, and all floor plans, specifications and other development plans are subject to change and will not necessarily accurately reflect the final plans and specifications for the development.



Pines Garden
at City Center

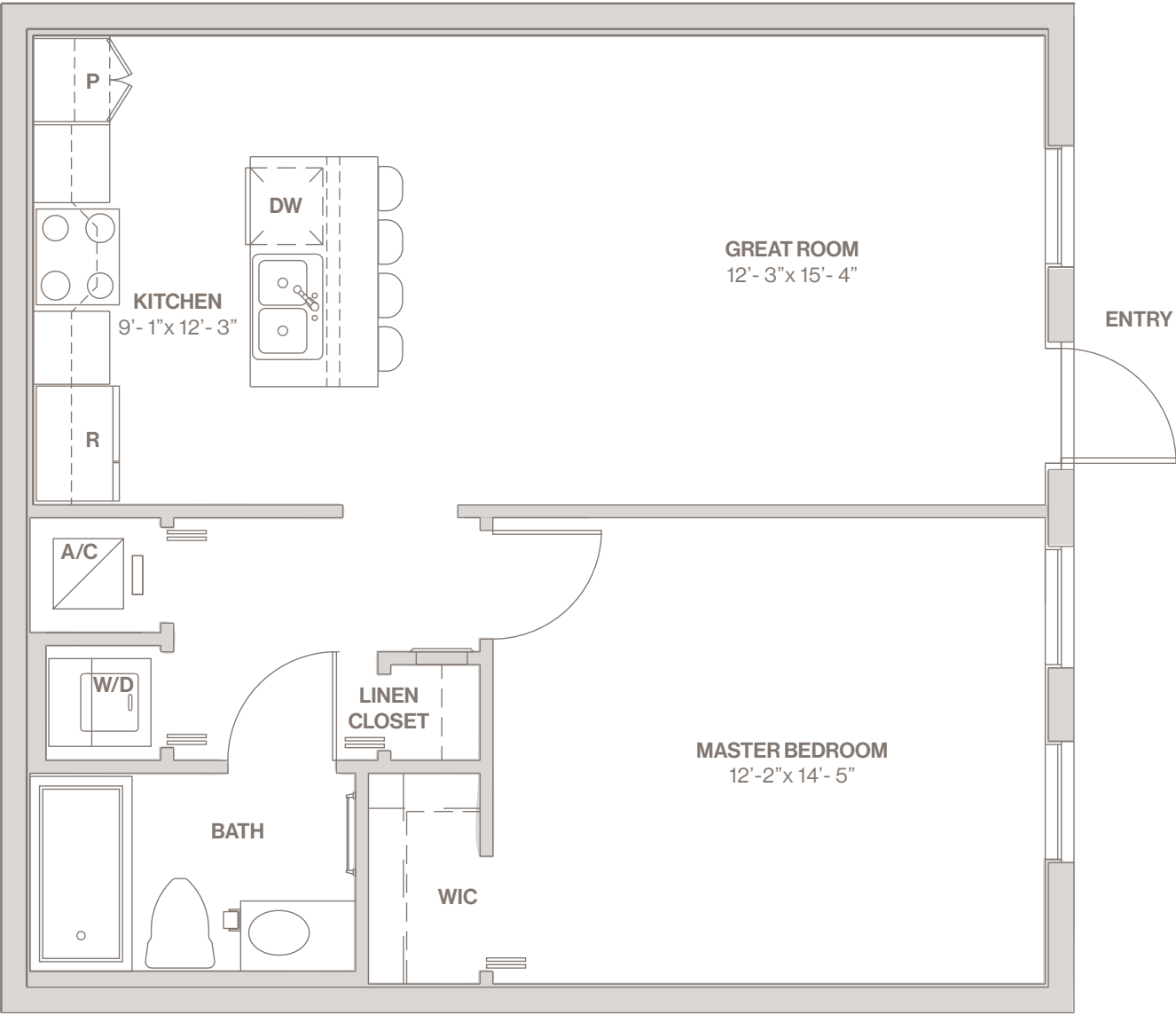
GARDEN
FLAT B

1 Bedroom
1 Bathroom

Interior Area 713 SQ. FT.

Features

- Covered Entry
- Stainless Steel Appliances
- Kitchen Island with Breakfast Bar
- Quartz Counters in Kitchen and Bathrooms
- Custom Cabinetry
- Built-In Microwave
- Dishwasher
- Washer/Dryer
- Pantry
- Linen Closet
- Walk-in Closet in Master Bedroom
- Ceiling Fan in Master Bedroom



10400 City Center Boulevard
Pembroke Pines, FL 33025

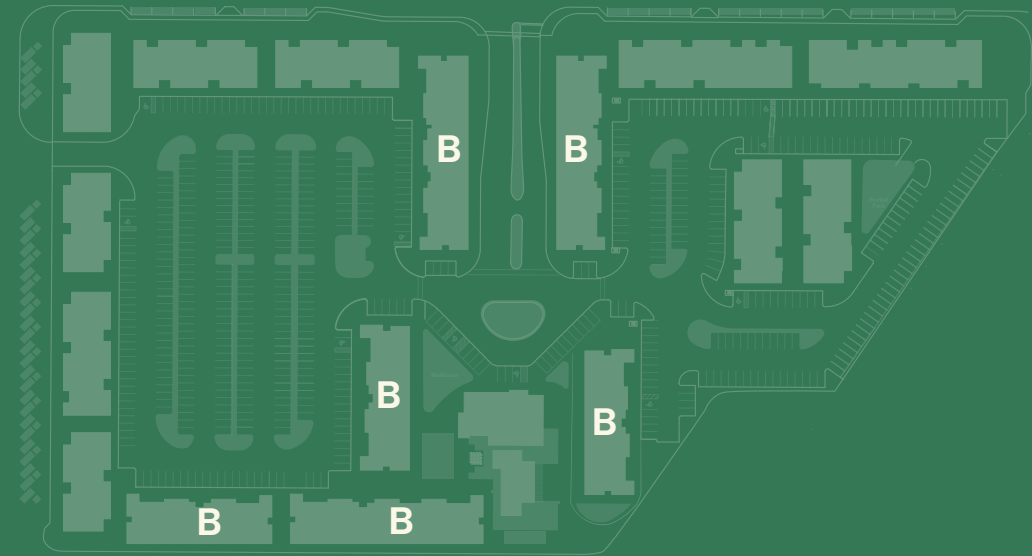
Ph. 954.884.5905
www.pinesgardenapartments.com

GARDEN FLAT

B

-  1 Bedroom
-  1 Bathroom

Interior Area 713 SQ. FT.



Stated square footages and dimensions are measured to the exterior boundaries of the exterior walls and the centerline of interior demising walls. Measurements of rooms set forth on this floor plan are generally taken at the farthest points of each given room (as if the room were a perfect rectangle), without regard for any cutouts or variations. Accordingly, the area of the actual room will typically be smaller than the product obtained by multiplying the stated length and width. All dimensions are estimates which will vary with actual construction, and all floor plans, specifications and other development plans are subject to change and will not necessarily accurately reflect the final plans and specifications for the development.



Pines Garden
at City Center

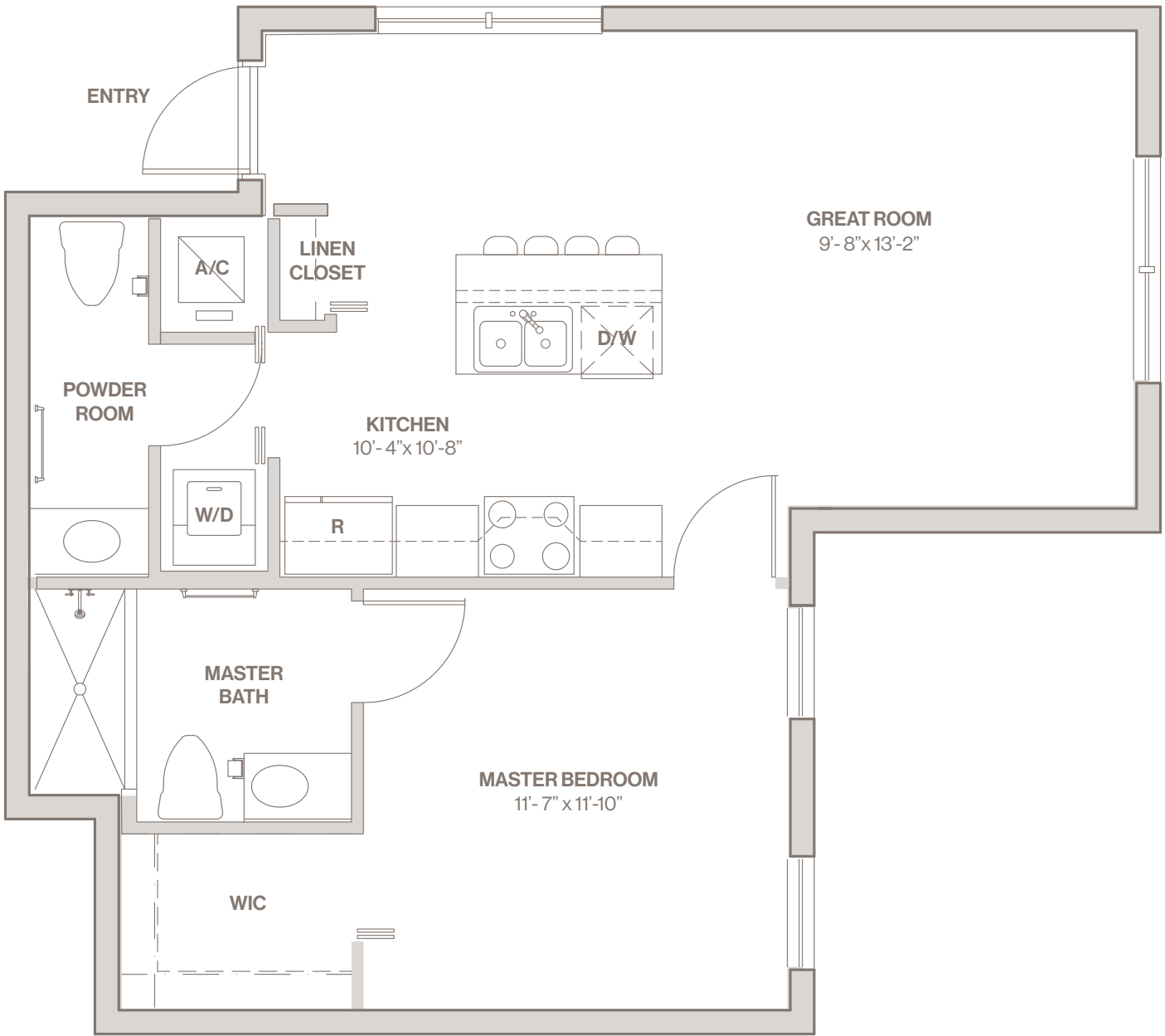
GARDEN
FLAT C

1 Bedroom
1 Bathroom
Plus Powder Room

Interior Area 725 SQ. FT.

Features

- Covered Entry
- Stainless Steel Appliances
- Kitchen Island with Breakfast Bar
- Quartz Counters in Kitchen and Bathroom
- Custom Cabinetry
- Built-In Microwave
- Dishwasher
- Washer/Dryer
- Linen Closet
- Ensuite Bathroom in Master Bedroom
- Walk-in Closet in Master Bedroom
- Ceiling Fan in Master Bedroom





10400 City Center Boulevard
Pembroke Pines, FL 33025

Ph. 954.884.5905
www.pinesgardenapartments.com

GARDEN FLAT

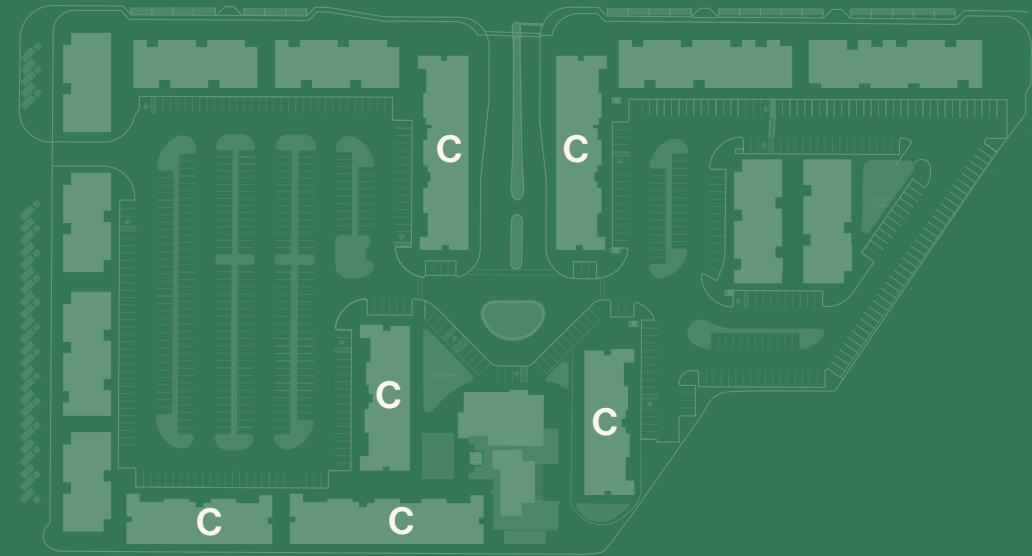
C

-  1 Bedroom

 1 Bathroom

Plus Powder Room

Interior Area 725 SQ. FT.



Stated square footages and dimensions are measured to the exterior boundaries of the exterior walls and the centerline of interior demising walls. Measurements of rooms set forth on this floor plan are generally taken at the farthest points of each given room (as if the room were a perfect rectangle), without regard for any cutouts or variations. Accordingly, the area of the actual room will typically be smaller than the product obtained by multiplying the stated length and width. All dimensions are estimates which will vary with actual construction, and all floor plans, specifications and other development plans are subject to change and will not necessarily accurately reflect the final plans and specifications for the development.



Pines Garden
at City Center

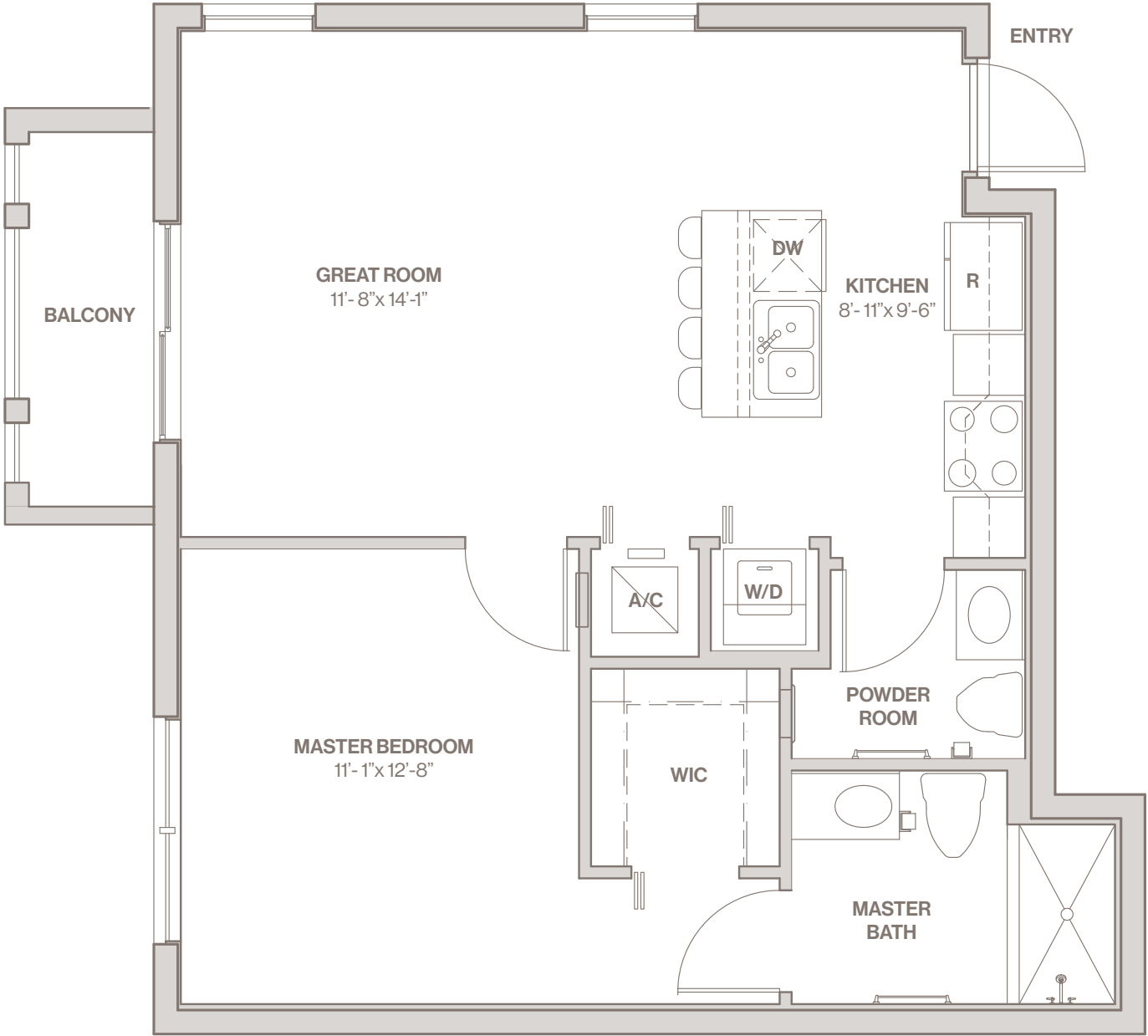
GARDEN
FLAT D

1 Bedroom
1 Bathroom
Plus Powder Room

Interior Area 708 SQ. FT.
Balcony Area 43 SQ. FT.
Total 751 SQ. FT.

Features

- Covered Entry
- Covered Balcony
- Stainless Steel Appliances
- Kitchen Island with Breakfast Bar
- Quartz Counters in Kitchen and Bathroom
- Custom Cabinetry
- Built-In Microwave
- Dishwasher
- Washer/Dryer
- Ensuite Bathroom in Master Bedroom
- Walk-in Closet in Master Bedroom
- Ceiling Fan in Master Bedroom





10400 City Center Boulevard
Pembroke Pines, FL 33025

Ph. 954.884.5905
www.pinesgardenapartments.com

GARDEN FLAT

D

-  1 Bedroom

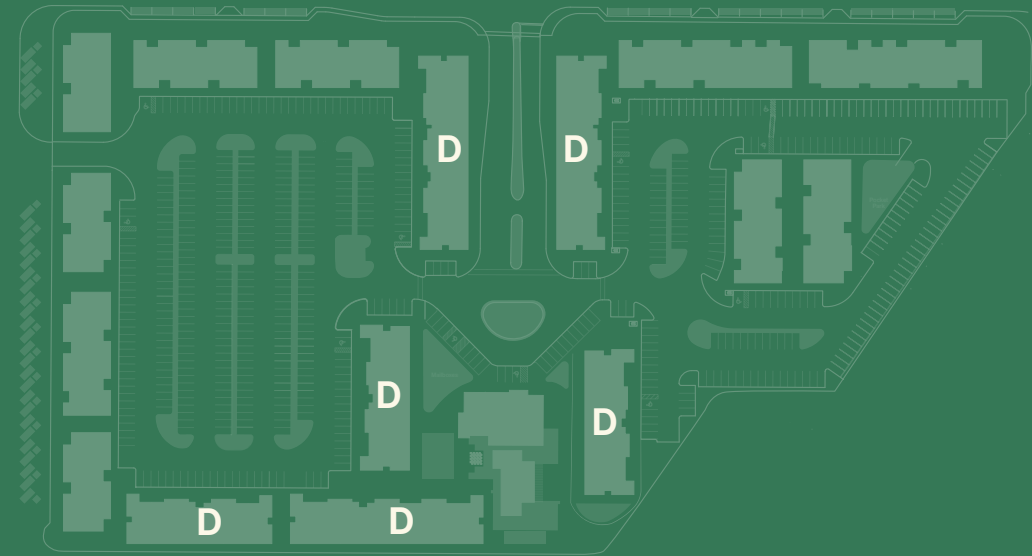
 1 Bathroom

Plus Powder Room

Interior Area 708 SQ. FT.

Balcony Area 43 SQ. FT.

Total 751 SQ. FT.



Stated square footages and dimensions are measured to the exterior boundaries of the exterior walls and the centerline of interior demising walls. Measurements of rooms set forth on this floor plan are generally taken at the farthest points of each given room (as if the room were a perfect rectangle), without regard for any cutouts or variations. Accordingly, the area of the actual room will typically be smaller than the product obtained by multiplying the stated length and width. All dimensions are estimates which will vary with actual construction, and all floor plans, specifications and other development plans are subject to change and will not necessarily accurately reflect the final plans and specifications for the development.



Pines Garden

at City Center

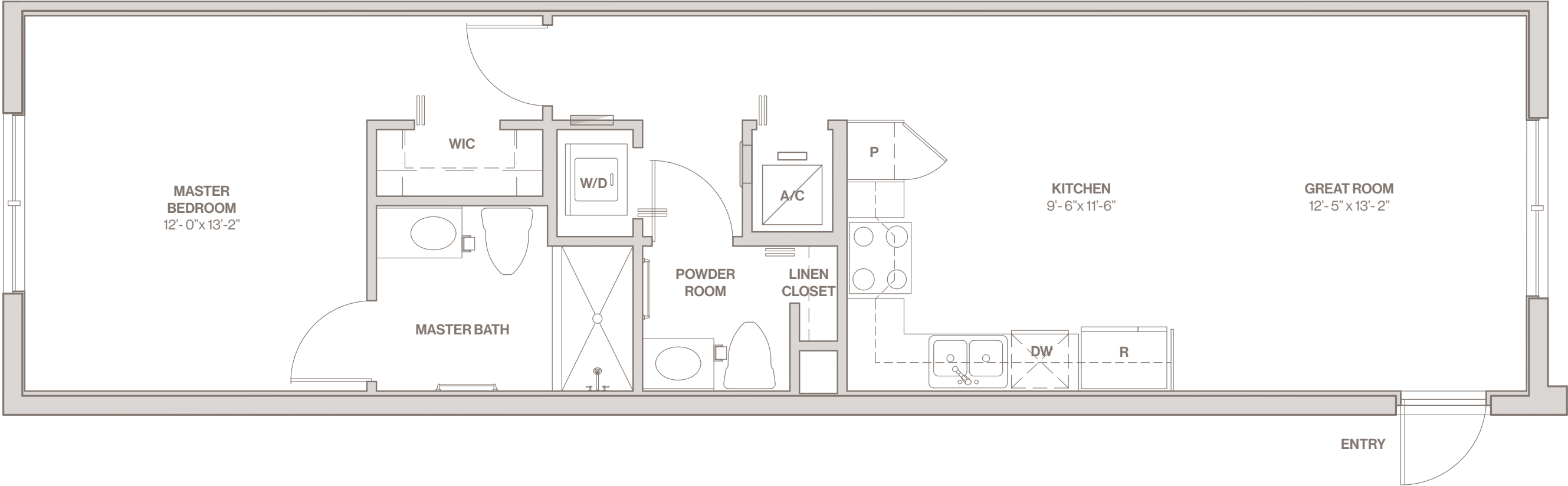
GARDEN
FLAT E

1 Bedroom
1 Bathroom
Plus Powder Room

Interior Area 772 SQ. FT.

Features

- Covered Entry
- Stainless Steel Appliances
- Quartz Counters in Kitchen and Bathrooms
- Custom Cabinetry
- Built-In Microwave
- Dishwasher
- Washer/Dryer
- Pantry
- Linen Closet
- Walk-in Closet in Master Bedroom
- Ensuite Bathroom in Master Bedroom
- Ceiling Fan in Master Bedroom





10400 City Center Boulevard
Pembroke Pines, FL 33025

Ph. 954.884.5905
www.pinesgardenapartments.com

GARDEN FLAT

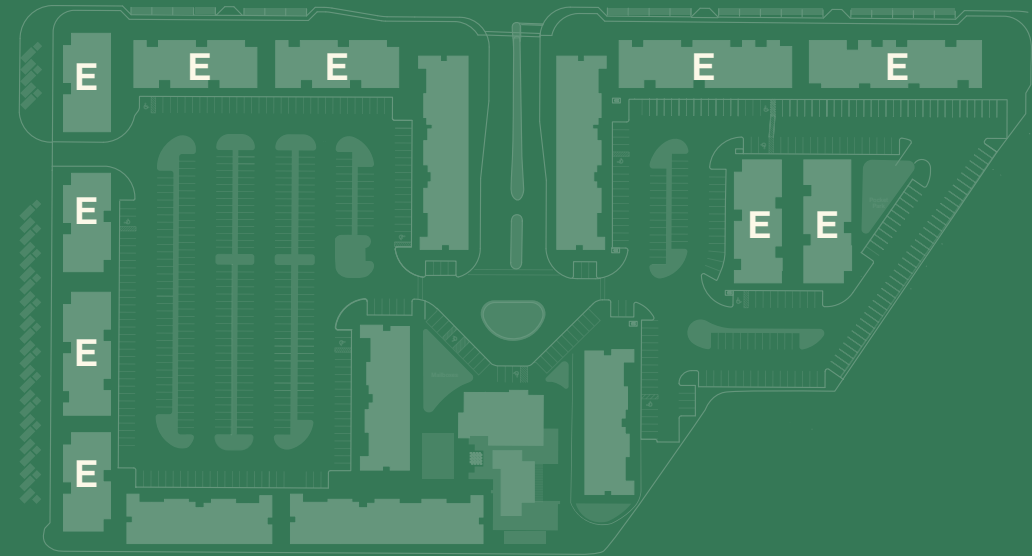
E

-  1 Bedroom

 1 Bathroom

Plus Powder Room

Interior Area 772 SQ. FT.



Stated square footages and dimensions are measured to the exterior boundaries of the exterior walls and the centerline of interior demising walls. Measurements of rooms set forth on this floor plan are generally taken at the farthest points of each given room (as if the room were a perfect rectangle), without regard for any cutouts or variations. Accordingly, the area of the actual room will typically be smaller than the product obtained by multiplying the stated length and width. All dimensions are estimates which will vary with actual construction, and all floor plans, specifications and other development plans are subject to change and will not necessarily accurately reflect the final plans and specifications for the development.



Pines Garden
at City Center

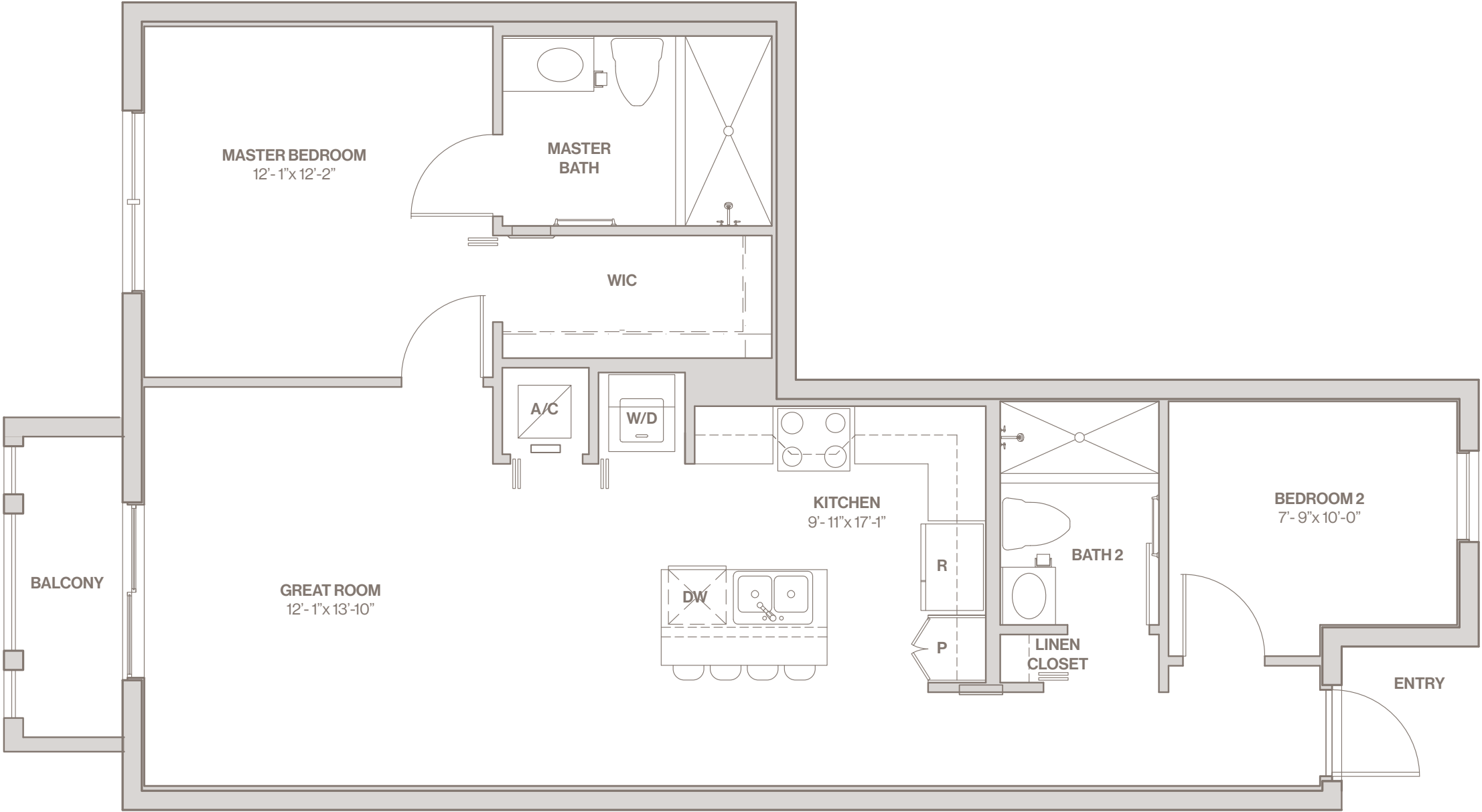
GARDEN
FLAT F

2 Bedrooms
2 Bathrooms

Interior Area 945 SQ. FT.
Balcony Area 43 SQ. FT.
Total: 988 SQ. FT.

Features

- Covered Entry
- Covered Balcony
- Stainless Steel Appliances
- Kitchen Island with Breakfast Bar
- Quartz Counters in Kitchen and Bathrooms
- Custom Cabinetry
- Built-In Microwave
- Washer/Dryer
- Dishwasher
- Pantry
- Linen Closet
- Ensuite Bathroom in Master Bedroom
- Walk-in Closet in Master Bedroom
- Ceiling Fan in Master Bedroom





10400 City Center Boulevard
Pembroke Pines, FL 33025

Ph. 954.884.5905
www.pinesgardenapartments.com

GARDEN FLAT

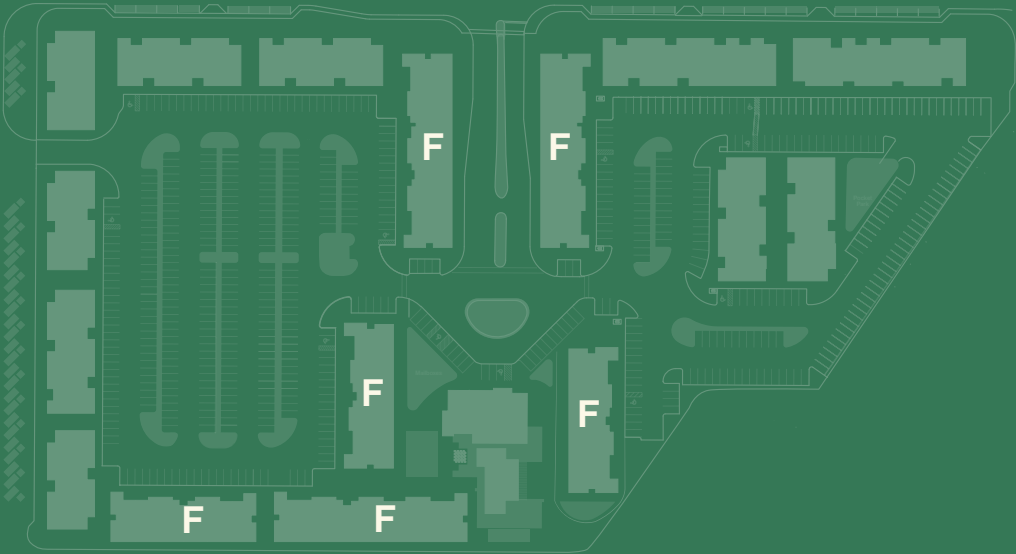
F

-  2 Bedroom
-  2 Bathroom

Interior Area 945 SQ. FT.

Balcony Area 43 SQ. FT.

Total: 988 SQ. FT.



Stated square footages and dimensions are measured to the exterior boundaries of the exterior walls and the centerline of interior demising walls. Measurements of rooms set forth on this floor plan are generally taken at the farthest points of each given room (as if the room were a perfect rectangle), without regard for any cutouts or variations. Accordingly, the area of the actual room will typically be smaller than the product obtained by multiplying the stated length and width. All dimensions are estimates which will vary with actual construction, and all floor plans, specifications and other development plans are subject to change and will not necessarily accurately reflect the final plans and specifications for the development.



Pines Garden

at City Center

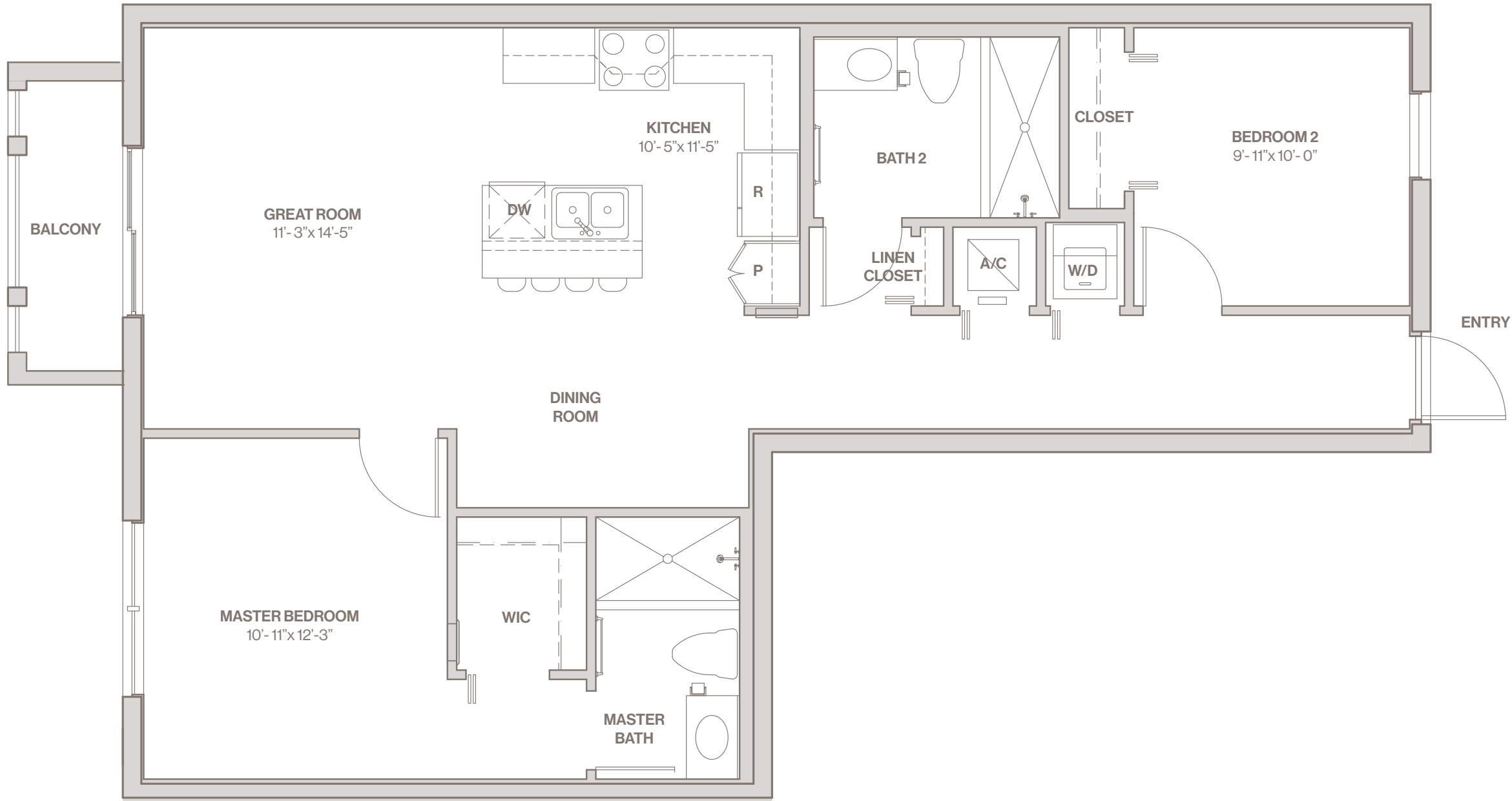
GARDEN
FLAT G

2 Bedrooms
2 Bathrooms

Interior Area 1,014 SQ. FT.
Balcony Area 43 SQ. FT.
Total: 1,057 SQ. FT.

Features

- Covered Entry
- Covered Balcony
- Stainless Steel Appliances
- Kitchen Island with Breakfast Bar
- Quartz Counters in Kitchen and Bathrooms
- Custom Cabinetry
- Built-In Microwave
- Dishwasher
- Washer/Dryer
- Pantry
- Linen Closet
- Ensuite Bathroom in Master Bedroom
- Walk-in Closet in Master Bedroom
- Ceiling Fan in Master Bedroom





10400 City Center Boulevard
Pembroke Pines, FL 33025

Ph. 954.884.5905
www.pinesgardenapartments.com

GARDEN FLAT

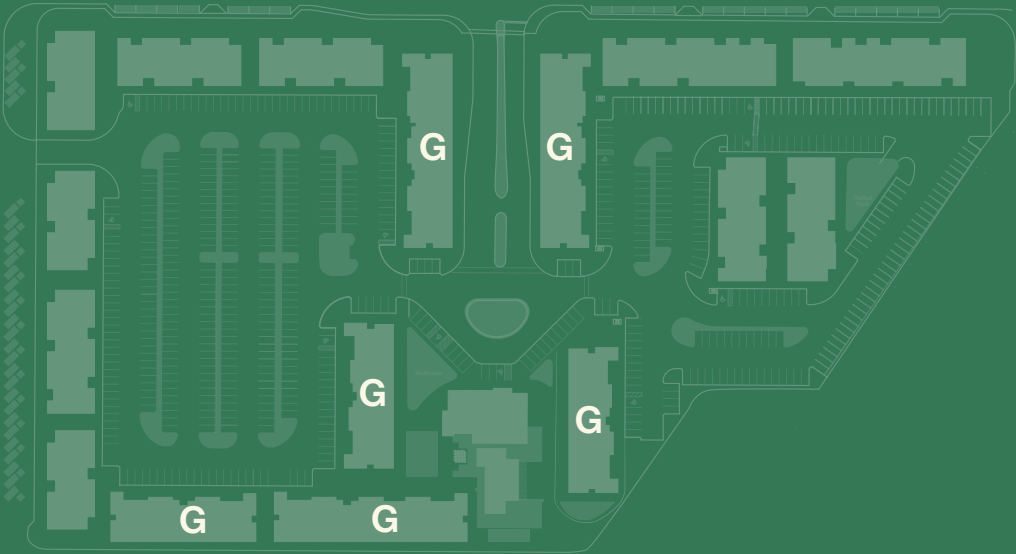
G

-  2 Bedrooms
-  2 Bathrooms

Interior Area 1,014 SQ. FT.

Balcony Area 43 SQ. FT.

Total: 1,057 SQ. FT.



Stated square footages and dimensions are measured to the exterior boundaries of the exterior walls and the centerline of interior demising walls. Measurements of rooms set forth on this floor plan are generally taken at the farthest points of each given room (as if the room were a perfect rectangle), without regard for any cutouts or variations. Accordingly, the area of the actual room will typically be smaller than the product obtained by multiplying the stated length and width. All dimensions are estimates which will vary with actual construction, and all floor plans, specifications and other development plans are subject to change and will not necessarily accurately reflect the final plans and specifications for the development.



Pines Garden

at City Center

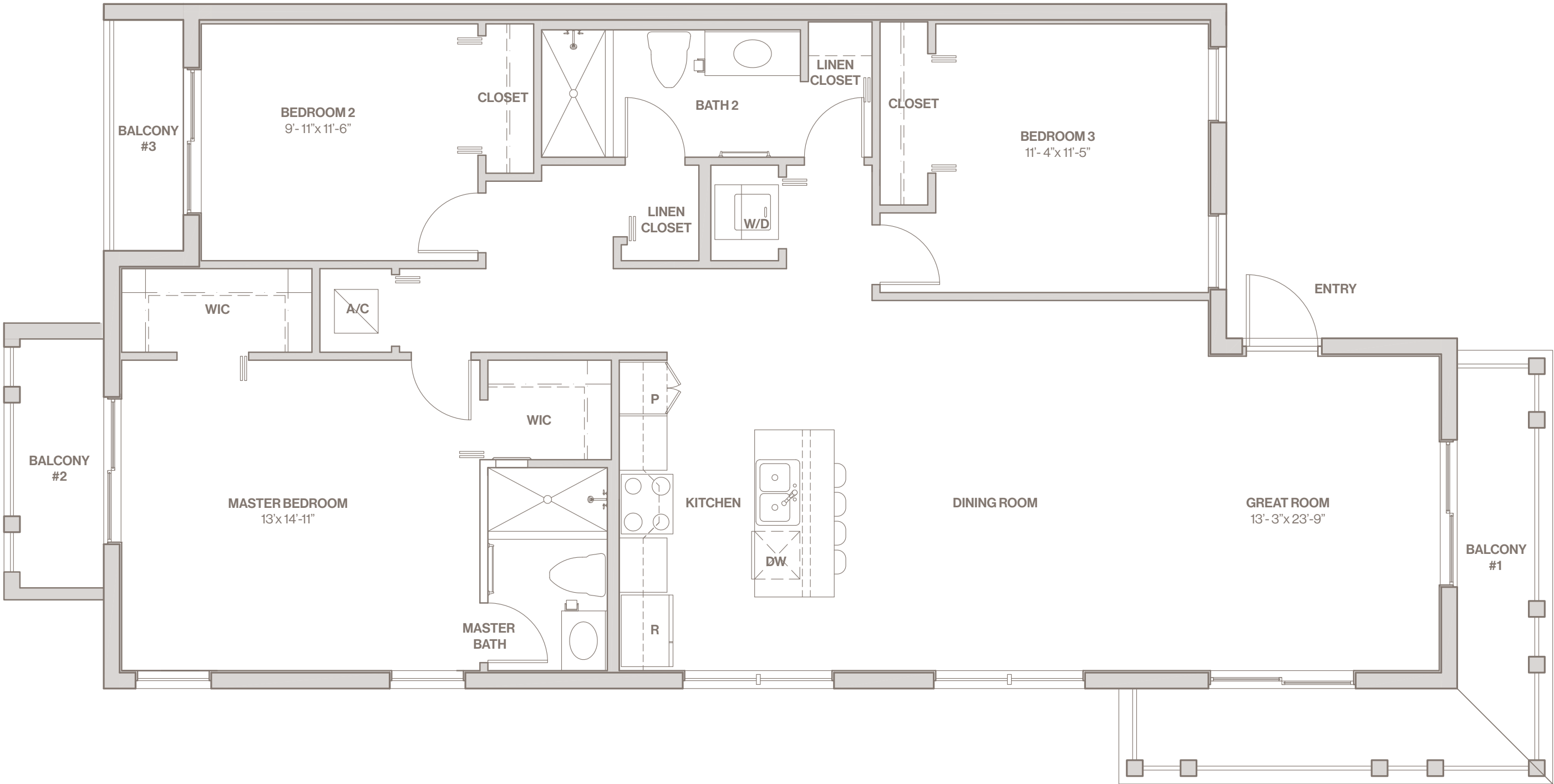
GARDEN
FLATH

3 Bedrooms
2 Bathrooms

Interior Area 1,440 SQ. FT.
Balcony Area 204 SQ. FT.
Total: 1,644 SQ. FT.

Features

- Covered Entry
- 3 Covered Balconies
- Stainless Steel Appliances
- Kitchen Island with Breakfast Bar
- Quartz Counters in Kitchen and Bathrooms
- Custom Cabinetry
- Mosaic Tile Backsplash in Kitchen
- Built-In Microwave
- Dishwasher
- Washer/Dryer
- Pantry
- 2 Linen Closets
- Ensuite Bathroom in Master Bedroom
- 2 Walk-in Closet in Master Bedroom
- Ceiling Fan in Master Bedroom



10400 City Center Boulevard
Pembroke Pines, FL 33025

Ph. 954.884.5905
www.pinesgardenapartments.com

GARDEN FLAT

H

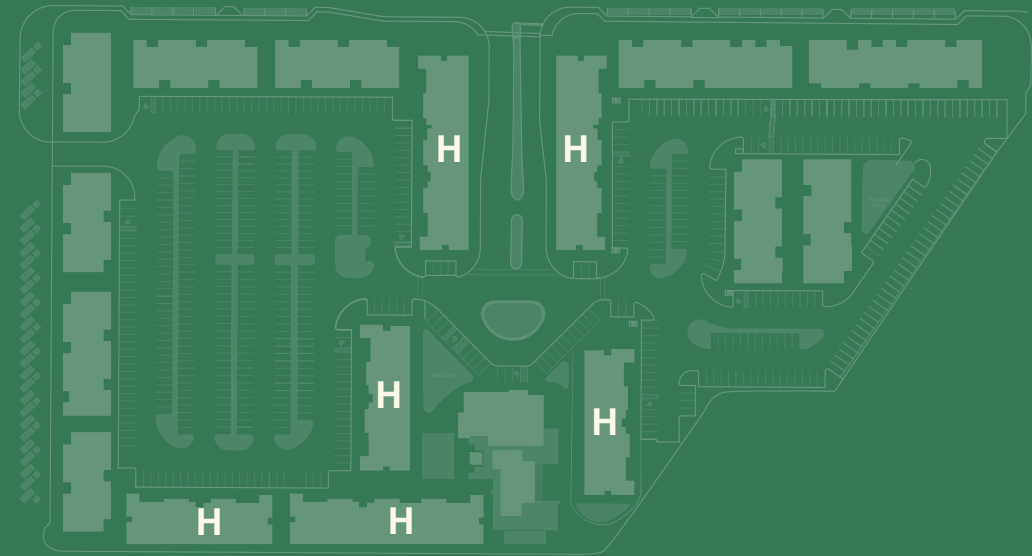
-  3 Bedrooms

 2 Bathrooms

Interior Area 1,440 SQ. FT.

Balcony Area 204 SQ. FT.

Total 1,644 SQ. FT.



Stated square footages and dimensions are measured to the exterior boundaries of the exterior walls and the centerline of interior demising walls. Measurements of rooms set forth on this floor plan are generally taken at the farthest points of each given room (as if the room were a perfect rectangle), without regard for any cutouts or variations. Accordingly, the area of the actual room will typically be smaller than the product obtained by multiplying the stated length and width. All dimensions are estimates which will vary with actual construction, and all floor plans, specifications and other development plans are subject to change and will not necessarily accurately reflect the final plans and specifications for the development.



Pines Garden
at City Center

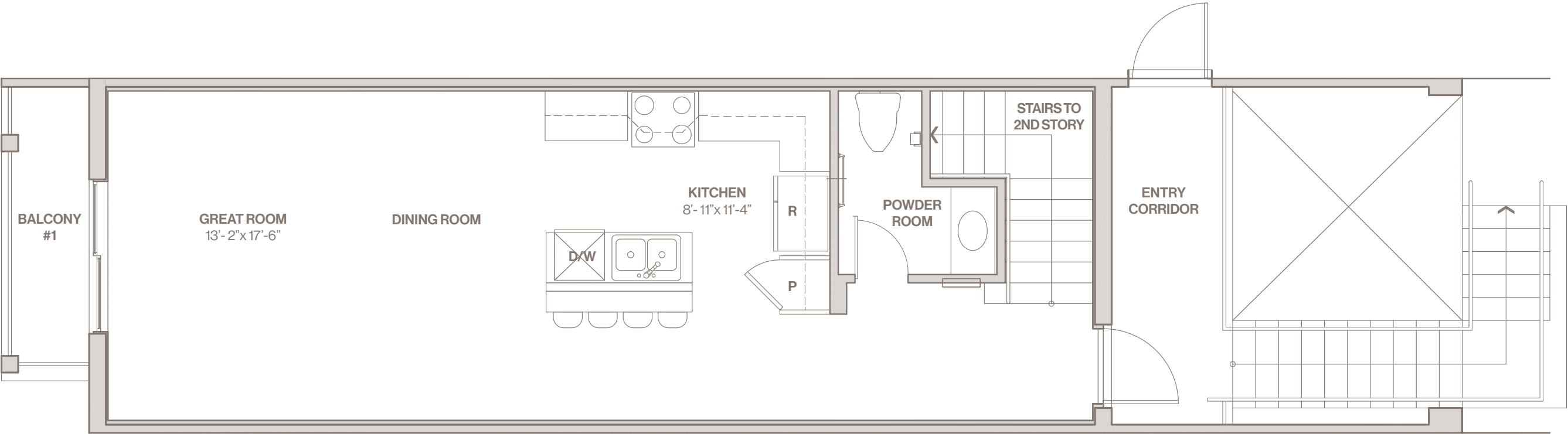
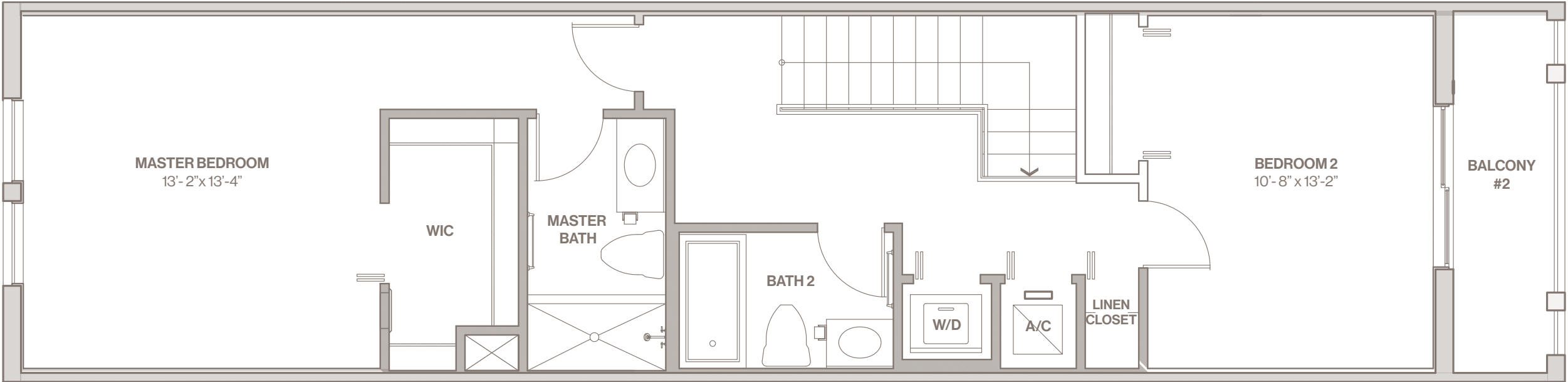
TOWNHOME A

2-Story Townhome
2 Bedrooms
2 Bathrooms
Plus Powder Room

Interior Area 1,302 SQ.FT.
Balcony Area 101 SQ.FT.
Total: 1,403 SQ.FT.

Features

- Covered Entry
- 2 Covered Balconies
- Stainless Steel Appliances
- Quartz Counters in Kitchen and Bathrooms
- Custom Cabinetry
- Kitchen Island with Breakfast Bar
- Built-In Microwave
- Dishwasher
- Washer/Dryer
- Pantry
- Linen Closet
- Walk-in Closet in Master Bedroom
- Ensuite Bathroom in Master Bedroom
- Ceiling Fan in Master Bedroom




10400 City Center Boulevard
Pembroke Pines, FL 33025


Ph. 954.884.5905
www.pinesgardenapartments.com

TOWNHOME

A

2-Story Townhome

 2 Bedrooms

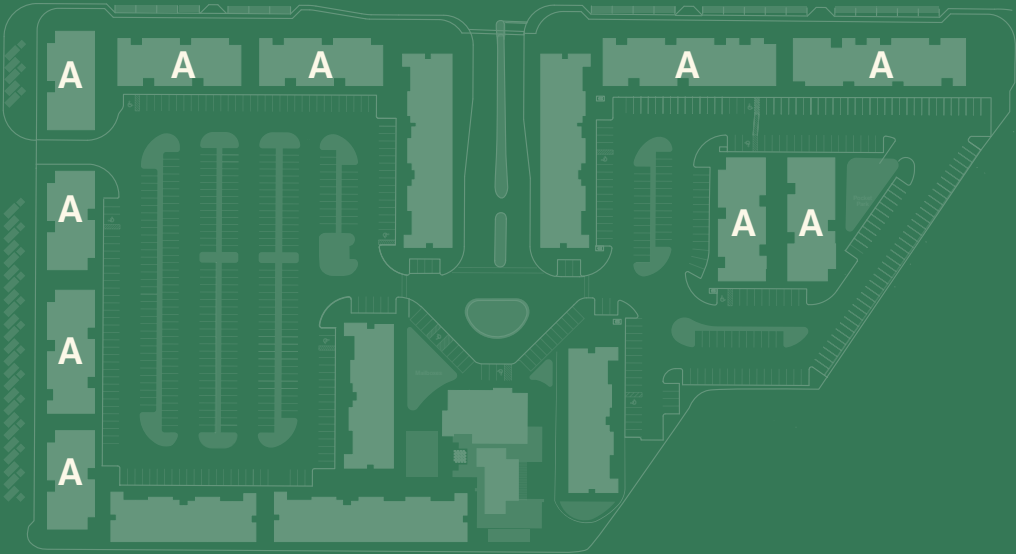
 2 Bathrooms

Plus Powder Room


Interior Area 1,302 SQ.FT.

Balcony Area 101 SQ.FT.

Total: 1,403 SQ.FT.



Stated square footages and dimensions are measured to the exterior boundaries of the exterior walls and the centerline of interior demising walls. Measurements of rooms set forth on this floor plan are generally taken at the farthest points of each given room (as if the room were a perfect rectangle), without regard for any cutouts or variations. Accordingly, the area of the actual room will typically be smaller than the product obtained by multiplying the stated length and width. All dimensions are estimates which will vary with actual construction, and all floor plans, specifications and other development plans are subject to change and will not necessarily accurately reflect the final plans and specifications for the development.



Pines Garden

at City Center

TOWNHOME B

2-Story Townhome

3 Bedrooms

3 Bathrooms

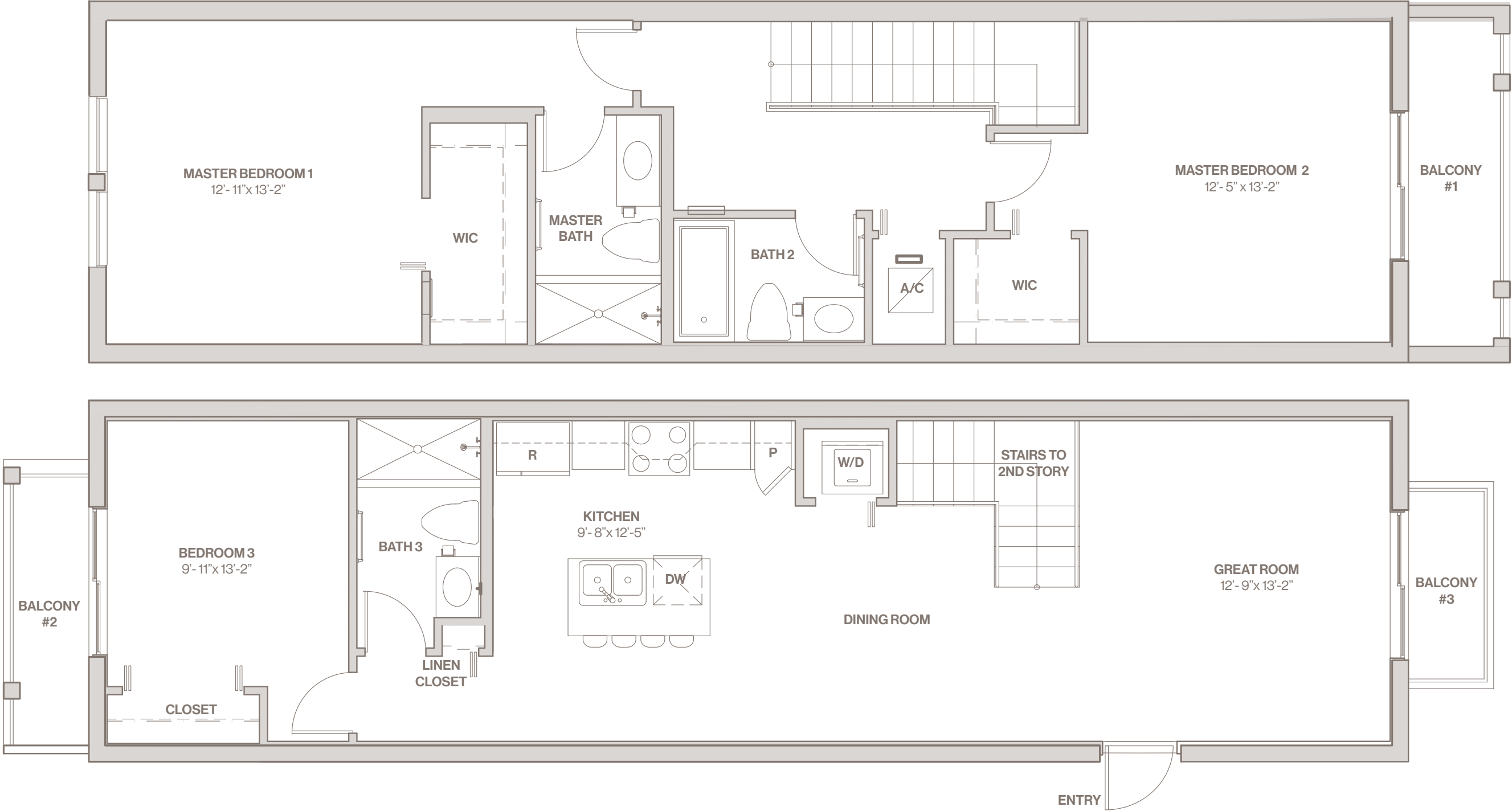
Interior Area 1,491 SQ.FT.

Balcony Area 130 SQ.FT.

Total: 1,621 SQ.FT.

Features

- Covered Entry
- 3 Covered Balconies
- Stainless Steel Appliances
- Quartz Counters in Kitchen and Bathrooms
- Custom Cabinetry
- Kitchen Island with Breakfast Bar
- Mosaic Tile Backsplash
- Built-In Microwave
- Dishwasher
- Washer/Dryer
- Pantry
- Linen Closet
- Walk-in Closet in Master Bedroom 1 and 2
- Ensuite Bathroom in Master Bedroom 1
- Ceiling Fan in Master Bedroom 1





10400 City Center Boulevard
Pembroke Pines, FL 33025

Ph. 954.884.5905
www.pinesgardenapartments.com

TOWNHOME

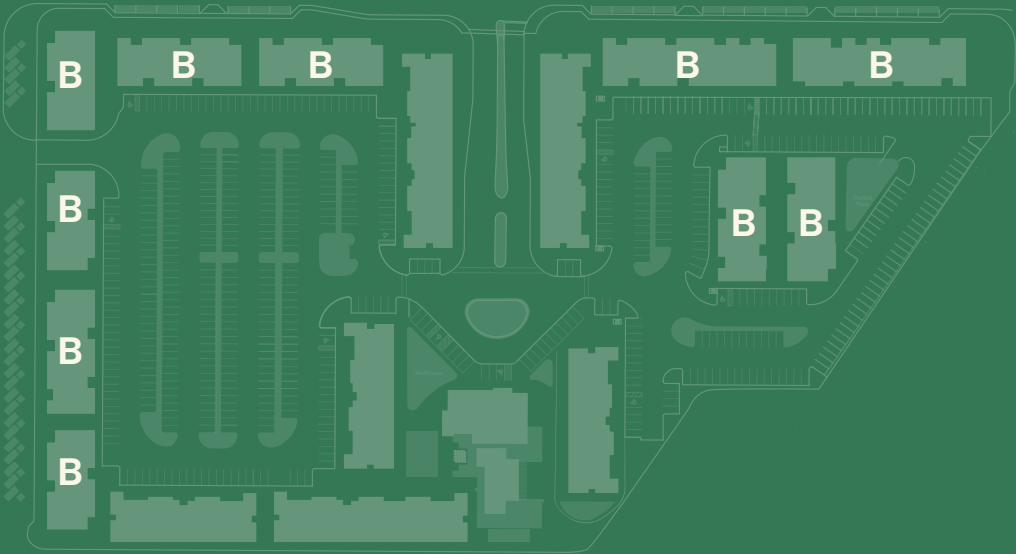
B

- 2-Story Townhome
-  3 Bedrooms
-  3 Bathrooms

Interior Area 1,491 SQ.FT.

Balcony Area 130 SQ.FT.

Total: 1,621 SQ.FT.



Stated square footages and dimensions are measured to the exterior boundaries of the exterior walls and the centerline of interior demising walls. Measurements of rooms set forth on this floor plan are generally taken at the farthest points of each given room (as if the room were a perfect rectangle), without regard for any cutouts or variations. Accordingly, the area of the actual room will typically be smaller than the product obtained by multiplying the stated length and width. All dimensions are estimates which will vary with actual construction, and all floor plans, specifications and other development plans are subject to change and will not necessarily accurately reflect the final plans and specifications for the development.



Pines Garden

at City Center